

ICT UNDERPINS THE FUTURE



Portuguese ICT...
... will to Innovate and Strength to amaze!

Table of Contents

General Framework

Portuguese ICT Sector	3
TICE.PT - Portuguese ICT National Cluster	

Education	7
-----------	---

Energy	11
--------	----

ePlatforms	13
------------	----

Insurance	19
-----------	----

Media	29
-------	----

Mobility	33
----------	----

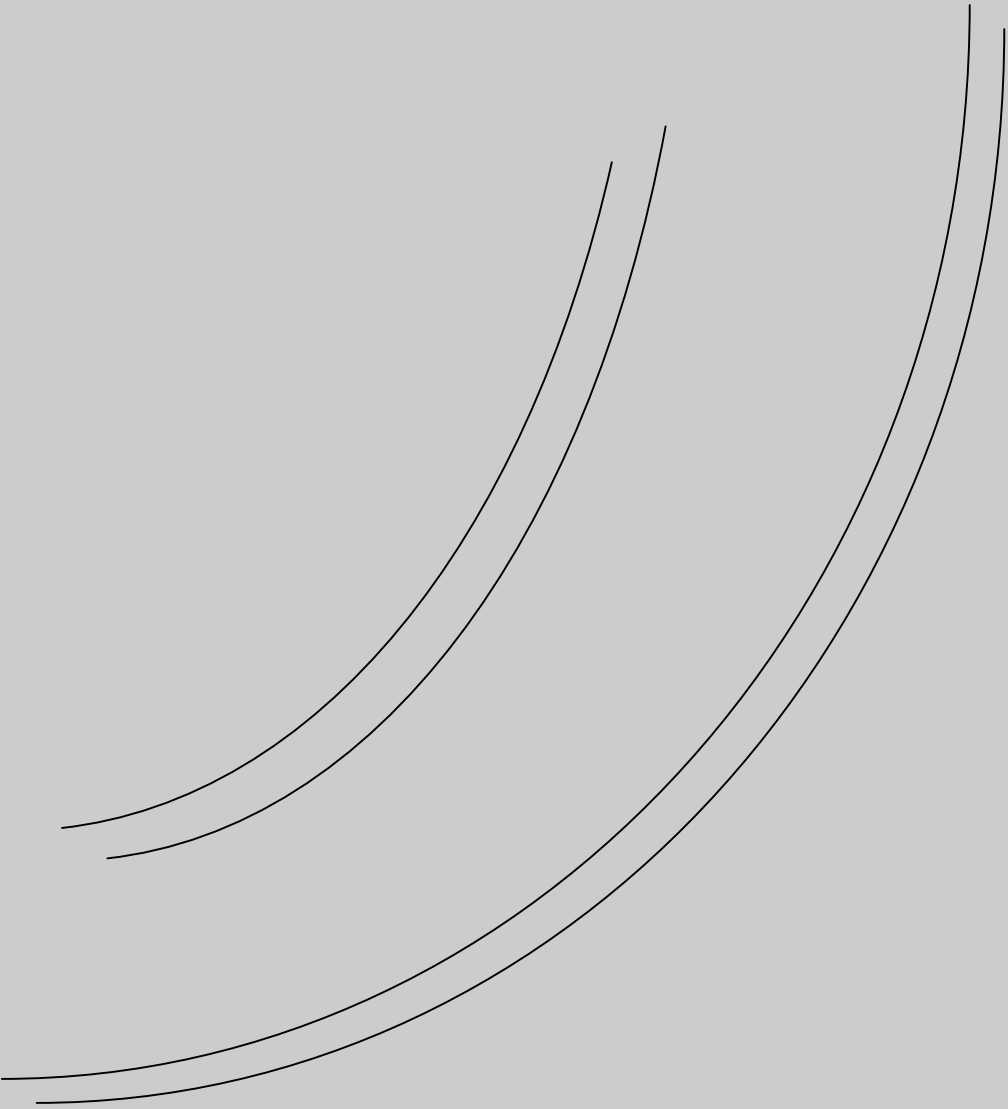
Security	45
----------	----

Software	49
----------	----

Telecommunications	53
--------------------	----

Touch... information	63
----------------------	----

eTourism	71
----------	----



General Framework



Portuguese ICT Sector

The Portuguese National ICT Sector is an highly innovative and dynamic sector, which already represents nearly 10% of the Portuguese GDP, reaching almost 20 Billion US \$ in total turnover. With young and highly qualified resources, it employs more than 80.000 people. And in the past decade the profile of companies changed from traditional ICT providers to highly specified and innovative start-ups, supported by world-class research developed in partnership with the Portuguese universities.

Nowadays, almost 20% of the Portuguese ICT businesses are already made abroad, the goal of [TICE.PT](#) is to contribute to this journey towards Internationalization of Portuguese companies.

For more reference examples of Portuguese ICT products and solutions please visit [TICE.PT](#) online catalogue at tice.oobian.com.



Portuguese ICT Sector

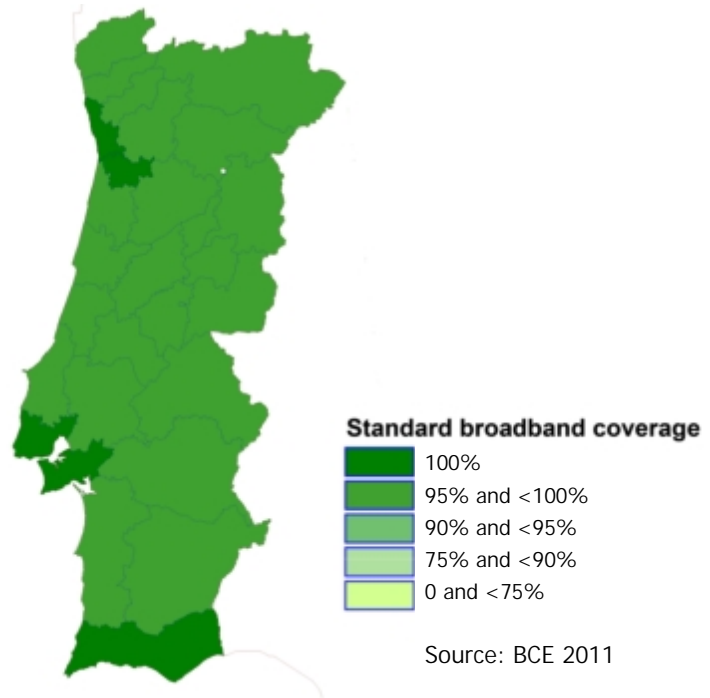
Portugal made major investments in broadband coverage, particularly for next generation access.

DATA

Fixed Internet access 2,4 million

Mobile Broadband Internet access 3,5 million

Optical Fibre access 0,4 million



TICE.PT - Portuguese ICT National Cluster

The Vision for the Portuguese ICT National Cluster TICE.PT is:

To turn Portugal into a world reference in the sector of ICT – Information, Communication and Electronics Technologies, by 2020,

with the following aim:

To place Portugal among the top 10 countries in the European Union, as concerns the importance of ICT:

- in GDP;
- in employment;
- in spending on R&TD;
- in total volume of exports.

The Mission for TICE.PT is:

Building a coordination platform that will involve and mobilise the TICE's main players in innovation processes, R&TD, transfer of knowledge, advanced training, development, production and marketing of products and services, marketing and internationalisation.





Education



eRed3 Interactive Whiteboard

The eRed3 is the right tool for modern, professional and engaging presentations within the classroom, training and office environments.

It is designed to be the simplest and most flexible interactive whiteboard to set-up and use. Being truly Plug & Play with 2GB of flash memory incorporated, you simply plug in a computer USB, calibrate and use. There is no need for discs or driver downloads, enabling visitors and temporary staff to use the board immediately. eRed 3 IWB is a touch system that recognizes the presence of finger, pen or wand, very easy to operate.

We offer you a 3 in 1 solution as it can be used as interactive whiteboard, as regular dry-erase board, or as a projection screen. The pure flat surface of the board is porcelain enamel on steel, built for intensive daily use as a regular whiteboard. Saving costs and improving your room layout as it avoids the need of two boards being installed side by side.

The eRed3 is designed with the latest technology and the best materials, resulting in a product that is very reliable, durable, and long lasting.

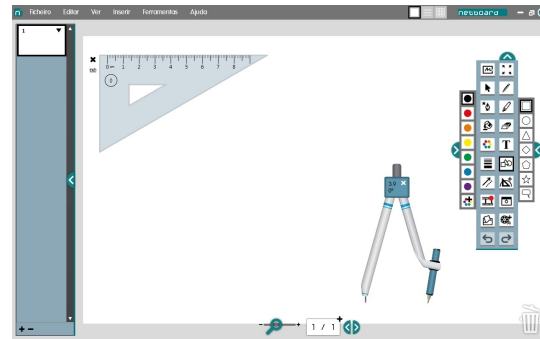
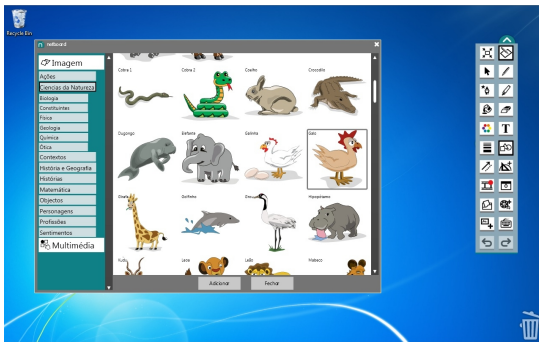


More info at <http://www.bibright.com/>



Netboard

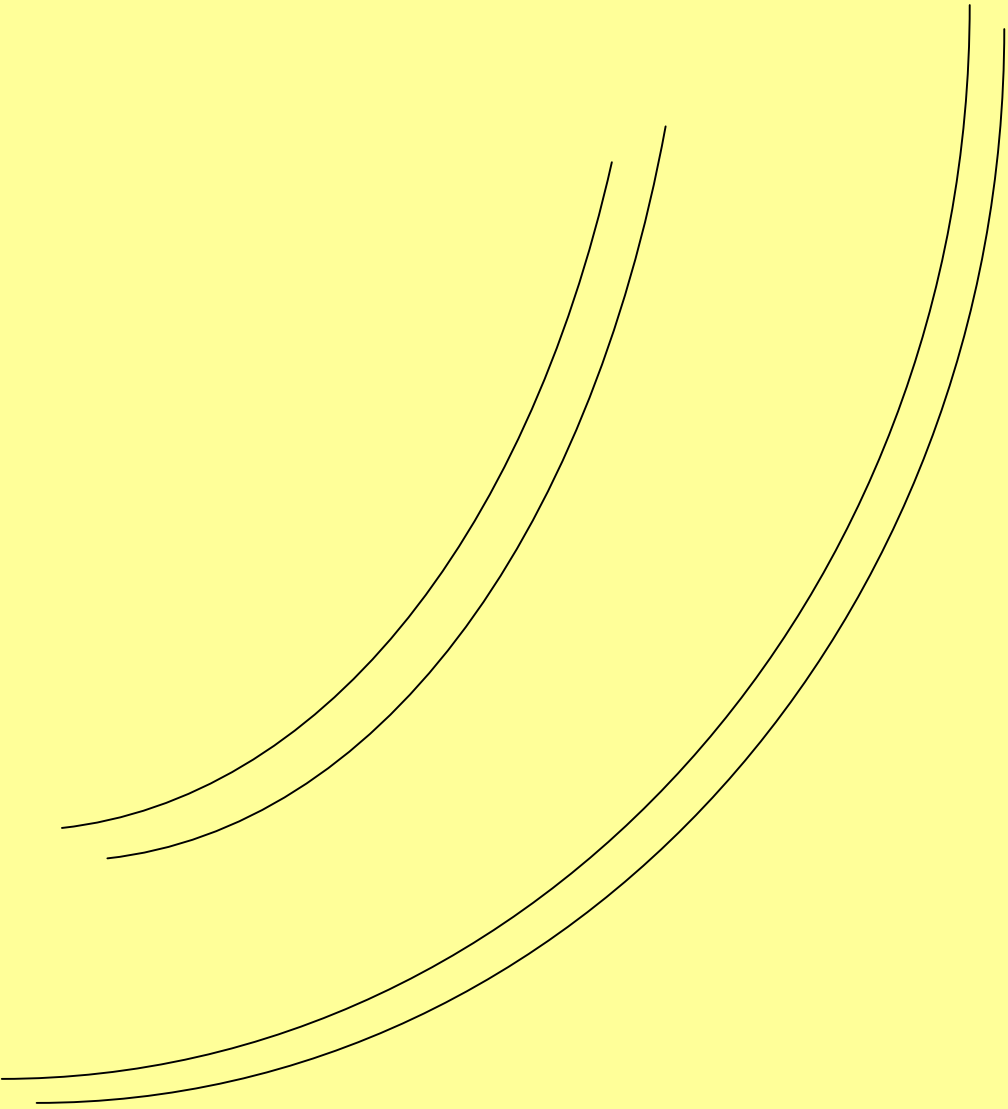
An educational software that provides intuitive and appealing tools allowing teachers to grab students' attention, by bringing dynamic and exciting content. Among multiple drawing and manipulation tools, net board also provides a rich gallery that contains many education multimedia and that can be easily inserted on the board.



The software is compatible with Windows, as well as with any brand of boards and projectors.

More info at <http://www.ubiwhere.com>





Energy

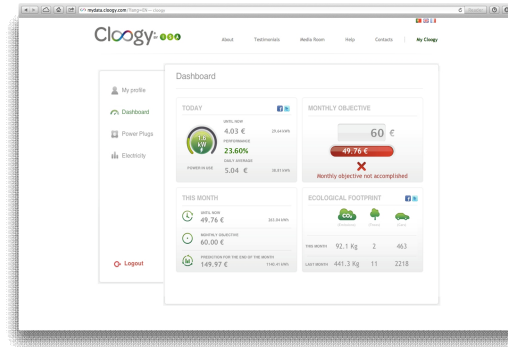


Cloogy

In order to evaluate and continuously measure energy consumption, it is necessary to implement better solutions with greater benefits. This is where the Cloogy experience comes into play.

Cloogy allows users to easily monitor their energy consumption and remotely control electrical equipment in their home or office. By allowing users to know where their house and office are inefficient and where energy can be saved, Cloogy® enables the optimization of electrical equipment usage, eliminate waste and unnecessary costs as well as promote a sustainable lifestyle.

Saving has become easier. The Cloogy range includes everything needed to save up to 25% on electricity bills.



More info at <http://www.isasensing.com/>





ePlatforms



Vortal eSourcing Platform

Vortal is one of the largest eSourcing and eCommerce providers in Europe, providing an electronic SaaS (Software-as-a-Service) platform that allows buying organizations to purchase goods and services cheaper and more efficiently and gives suppliers access to a greater number of sales and thus revenue opportunities.

Our solution:



Why Vortal



Vortal has been operating Public eProcurement Platforms since 2003 in an international context and is one of the most experienced operators, with the widest number of different contracting authorities using its platforms.

More info at <http://www.vortal.biz>



MB NET

A very secure
way to pay online

Without disclosing your
real card information.

www.mbnet.pt



MB NET guarantees secure and easy banking card (debit or credit) purchases at any online shop, without disclosing your debit or credit card number. The online purchase is done with a proxy card representing the data of the real banking card which is never disclosed to the merchant.

More info at <http://www.mbnet.pt>



MB CODE

An authentication mechanism and transactions' signature that removes the reuse of credentials, through an OTP System: One Time Password.

MB CODE allows the remote authentication of users through two independent features: the card (something you have) and the PIN (something you know), that ensure a high level of security – as the password provided during the authentication can only be used once. This service may be used whenever there's a need to authenticate a remote user, in both banking (e.g. Online Banking) and non-banking channels (e.g. Company's Portal).



More info at <http://www.sibs.pt/en>



ATM SERVICES

“The cash machine (...) provides the local community with a lot more than easy access to their euro. It is a multi-function kiosk where they can book train and cinema tickets, make social security and tax contributions (...) That is because the ATM in question is part of SIBS ATM network, (...) that offers more than 60 services.” in Financial Times, October 2009.

MULTIBANCO is internationally renowned as a benchmark case study of success and as highly innovative - world leader in ATM functionalities, deploying more than 60 different functions through the ATM network. SIBS was the first network processor in the world to offer mobile top-ups and is recognized as an innovator and leader in mobile payments, Internet virtual proxy cards, bill payments and contactless vehicle toll, parking and fuel payments.

The ATM operations' portfolio includes a wide list of transactions that facilitate everyday life, including Public Sector payments (e.g., taxes), transportation tickets reload train tickets purchasing, donations to charitable institutions and many others.

One of these services was granted an European eGovernment Award that acknowledges the increase of the administrative efficiency and effectiveness through the convenient access to hunting licenses via the electronic interbank network of MULTIBANCO's ATM.

Reload your
transportation tickets
at MULTIBANCO.



CONTRIBUTE TO
A GOOD CAUSE

Help your Charitable
Institution at MULTIBANCO.



MULTIBANCO Network

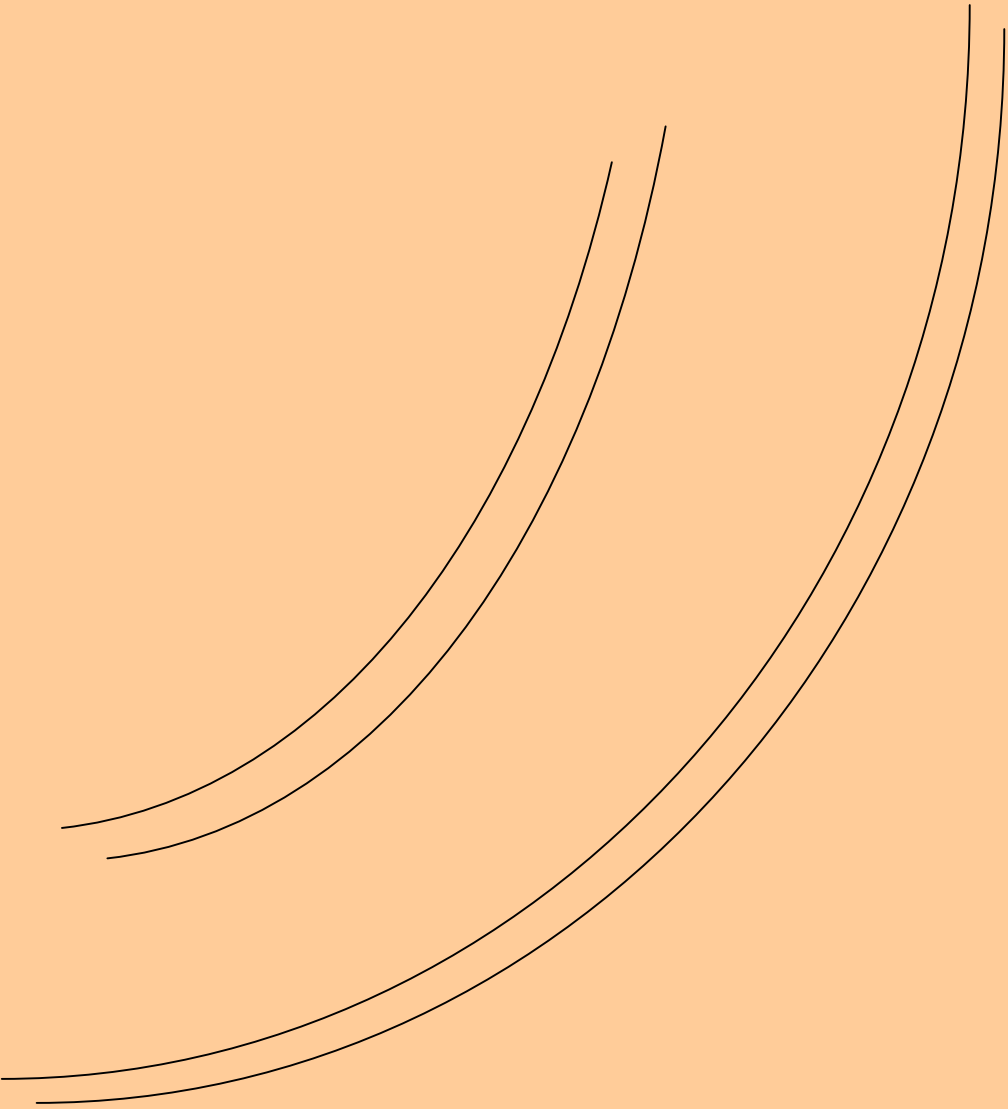
Any time, any place.

Over 60 different
transactions to make
your day easier.



More info at <http://www.sibs.pt/en>





Insurance



GIS Life

System which integrates a set of modules that support life business, considering all functional areas and all product types (risk, financial, endowment, unit linked, group).

- Policy administration system
- Billing & Collection
- Claims
- Reinsurance
- 360° client view
- Information management system
- Product Engineering



The GIS solution was built on two pillar concepts:

INTEGRATION

GIS considers and relates the different insurance functional areas, based on business processes logic and emphasizing the concept of Client

FLEXIBILITY

Based on the “CASE for insurance” concept, GIS provides all tools needed to configure and administer any product.

More info at <http://www.i2s.pt/gis/>



GIS Non-Life

System which integrates a set of modules that support non-life business, considering all functional areas and all lines of business.

- Policy administration system
- Billing & Collection
- Claims
- Reinsurance
- 360° client view
- Information management system
- Product Engineering



The GIS solution was built on two pillar concepts:

INTEGRATION

GIS considers and relates the different insurance functional areas, based on business processes logic and emphasizing the concept of Client

FLEXIBILITY

Based on the "CASE for insurance" concept, GIS provides all tools needed to configure and administer any product.

More info at <http://www.i2s.pt/gis/>



GIS Pension Funds

Global solution, designed to support pension funds administration and the activity of pension funds management societies, insurance consultants and Life insurers.

ACTUARIAL MANAGEMENT

Extremely flexible and stables, GIS Pension Funds is a Multilanguage and multi-currency solution.



GIS Solution Funds provides full support for all pension found lifecycle transactions.

Offering full features for pension plan actuarial definition, it enables creating new funds or performing actuarial evaluation of funds managed by pension funds management societies.

KEY FEATURES

- Unlimited number of funds and members
- Data organised by member and population type (active, retired and pensioners)
- Pension Plans actuarial definition:
 - Tables of mortality, disability, turnover, etc
 - Annuities
 - Calculation methods or different coverages (retirement, disability, pre and pos-retirement survivor benefits):

Benefits:

- * Complementary to Social Security schemes;
- * Independent from Social Security schemes

Funding methods:

- * PUC, CUC, Aggregate, Attained Age
- Automatic data integration or update from member provided files
- Possibility of exporting results to Microsoft Excel
- Configurable actuarial-financial analysis, including an estimate of the fund's growth.

More info at <http://www.i2s.pt/gis/>



GIS Brokers

A global solution designed to manage insurance brokers activity, GIS Brokers integrates the different brokerage functional areas, suiting all business dimensions. Being a scalable solution, GIS Brokers offers robust functionality to manage business evolution, enabling to rapidly recover the initial investment.

POLICY ADMINISTRATION SYSTEM

GIS Brokers manages every aspect of a policy lifecycle, from new business to contract administration.

CLAIMS MANAGEMENT

Registration and handling of claim processes and associated indemnity receipts, integrated with the Policy Administration System and Billing & Collections modules.

BILLING & COLLECTIONS

This module includes the administration of receipts lifecycle and the management of the different collection channels (treasury, agents, banks, etc.), providing all types of control reports to guarantee a timely collection of receipts.



More info at <http://www.i2s.pt/gis/>



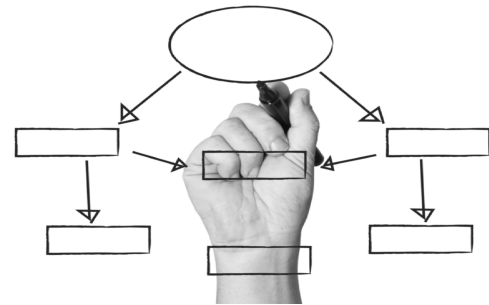
eGIS

eGIS is an e-insurance, multichannel and fully integrated architecture, which allows implementing front-office solutions (browser type) to meet the needs of the different distribution channels.

- Delegations
- Agents and brokers
- Bancassurance
- Home insurance

Solution which can be easily integrated with other systems, either internal (CRM, Call centre, Portal) or external (banks, agents and brokers, other partners, etc).

- Simulations
- Risk assessment
- Additional contribution and surrender requests (financial products)
- Claims
- Proposals
- Contract creation and changes, with acceptance control
- Rendering of accounts
- Enquiries



Business rules (defined at the back office) are maintained in a single repository and easily distributed by the different channels. New products can be launched in different distribution channels without specific developments, enabling a true speed-to-market.

Simplified deployment, with no need to install software. Only a web browser is required to use the application

Integration with GIS® core systems, preferably at service level (SOA).

Use of standard communication protocols (XML-based).

More info at <http://www.i2s.pt/gis/>



GIS BPM

GIS BPM is a platform fully integrated with the GIS solution, which enables modelling and automating insurance business processes.

- Underwriting
- Contract changes
- Purchasing
- Claims
- Complaints

Insurance business processes are modelled, configured and applied using GIS BPM, where each activity represents a group of actions which are immediately reflected in other applications. Such actions include, for example, the issuance of letters, which are automatically generated and immediately indexed and archived in the document management system. The claims component covers the whole management of claims, including notifications, registration of provisions or payment of indemnities.



KEY BENEFITS

- Job orientation
- Task automation
- Service levels control
- Increased productivity

More info at <http://www.i2s.pt/gis/>



GIS doc

Solution which enables handling, electronic archiving, delivery and control of digital documents, sourced from GIS and/or from external applications.

- Scanning
- Search and retrieval
- Annotation
- Administration
- Storage
- Cataloguing
- History



* The seamless integration between GISdoc and all other GIS modules regarding technical documents such as policies, receipts, claims or indemnities enables an integrated management of the different insurance associated documents.

* Fully integrated with GIS BPM, GISdoc enables implementing workflow systems for the control and approval of electronic documents around the organization.

More info at <http://www.i2s.pt/gis/>



GIS SIG

The system's ability to seamlessly integrate with other GIS modules based on insurance-specific structures and cataloguing methods enables out-of-the-box accounting processing, according to previously defined rules.

GIS SIG includes the following modules:

- Accounting
- Financial Management (Cash and Banks)
- Assets Management
- Conciliations
- Payments Management
- Advanced Information Analysis



KEY BENEFITS

- Flexibility and insurance market orientation
- GIS SIG is an independent module which can easily be adapted to any type of business, being specially tailored to address insurance companies' needs (Life and Non-life).

More info at <http://www.i2s.pt/gis/>



Media



SoundsLike.Me® - Music Discovery & Recommendation

Content-Based Music Discovery And Retrieval Engine

The incorporation of this technology in music services will introduce users to new usages:

- 1) This Engine allows user to easily find (drag & search) through acoustic similarities songs and/or artists with recently material releases (novelty & relevance).
- 2) It improves current discovery & search tools in music recommendation services and mitigates obstacles related to scalability, "cold-start" and one-sized selections.
- 3) Music navigation or audio browsing that create usage benefits for mobile users.
- 4) Access to the long tail of unclassified music collection (we have the capacity to process millions of songs from Client Music Collection and automatically generate playlists so that users have a more fulfilling experience in the process of discovery and search for music).

More info at <http://www.clustermedialabs.com>



LiveMeans® Engine - Content-Based Media Discovery

LiveMeans® Engine for:

- Automatic Speaker ID/Voice Recognition
- Real-time Video Ads Detection for Interactive TV Services
- Musical Genres / Keywords / Program Codes



The Automatic Speaker Recognition Engine will process the audio/video signal and will generate, in real time, the name of the person who is speaking, as well as the recognition accuracy rate. A dictionary will also be built with models of all personalities that are expected to speak during the TV or Radio footage, both in the studio environment as well as in exterior environments. This Analysis Engine assures robustness of the recognition rate in several environments, where there is normally a significant disparity in terms of tone, volume and dynamics of voice.

More info at <http://www.clustermedialabs.com>



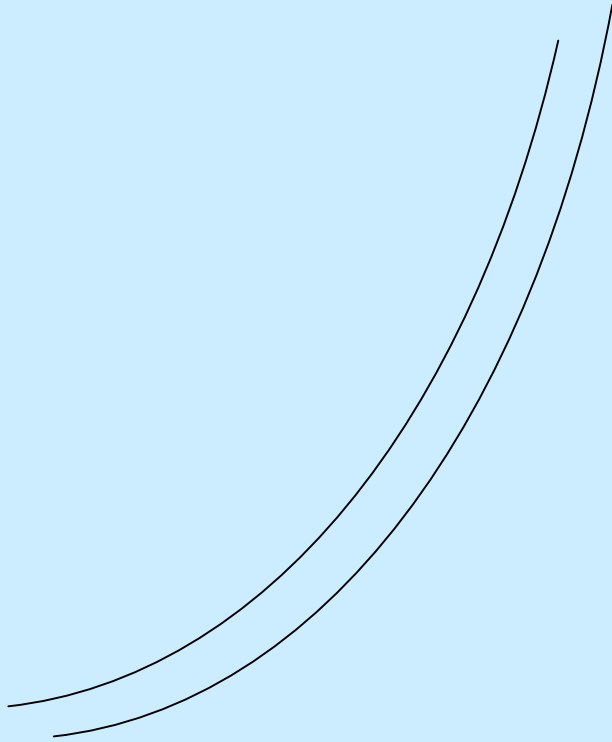
LiveXtend® OTT - Over-the-Top Video Platform

- SaaS – Software-as-a-Service Model
- Ultra low-cost TV HD Channel creation with scheduled playout (for unattended 24/7)
- Works with video standard MPEG-4 AVC/H.264/AAC
- Multi-screen (iOS, Android, Connected TVs, Browser, Windows Phone)
- Combines Live with pre-recorded content
- Closed Caption
- On-the-fly Overlay capability
- InStream Video Ads

www.livextend.com

More info at <http://www.clustermedialabs.com>



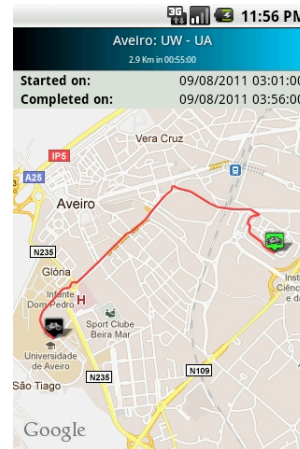
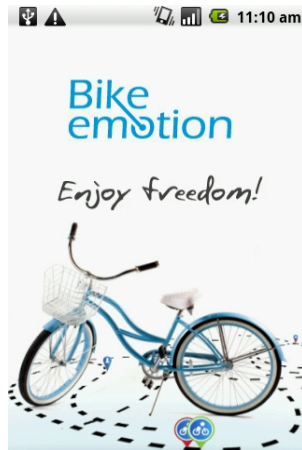


Mobility



Bikeemotion

A 4th generation bike sharing system which makes full use of modern technology for locating, booking and paying through a Smartphone and web platform. The lock and unlock engine is no longer on the hub stations but embedded in the bicycle itself. The mobile guide application provides users routes suggestions, list of points of interests and social interaction.



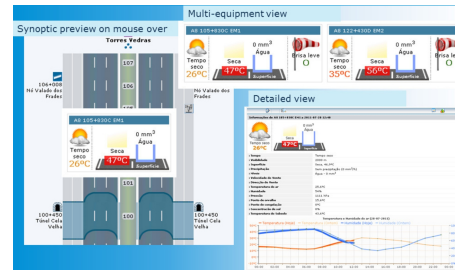
More info at <http://www.ubiwhere.com>



ATLAS: TRAFFIC MANAGEMENT - BRISA INNOVATION'S ATMIS (ADVANCED TRAFFIC MANAGEMENT AND INFORMATION SYSTEM)

ATLAS offers a complete web-based traffic management solution for road operators, regardless of the infrastructure's dimension. It features the integrated management of traffic, road-side telematics, road incidents, assistance means, road damages and road-work plans.

This solution has proven results operating large networks (over 2.000 kms), in multiple and different infrastructure concessions.



MULTILANE FREE - FLOW - BRISA INNOVATION'S OPEN ROAD TOLLING (ORT) SOLUTION

Demand for maximum throughput and high efficiency tolling services on the highway is a categorical requirement for both existing and emerging road toll operators worldwide.

Either for helping to reduce traffic congestion generated at peak periods, reduce noise, air pollution and other environmental impacts or to improve business profits and sustainability, multilane free-flow systems (MLFF) or open road tolling (ORT) is positioned to support such requirements, combining the benefits of technologies applied to the transport domain.

MLFF system solution created by Brisa Innovation is based on the efficient combination of electronic toll collection (ETC) microwave technology, video-processing and dynamic vehicle classification technological services.

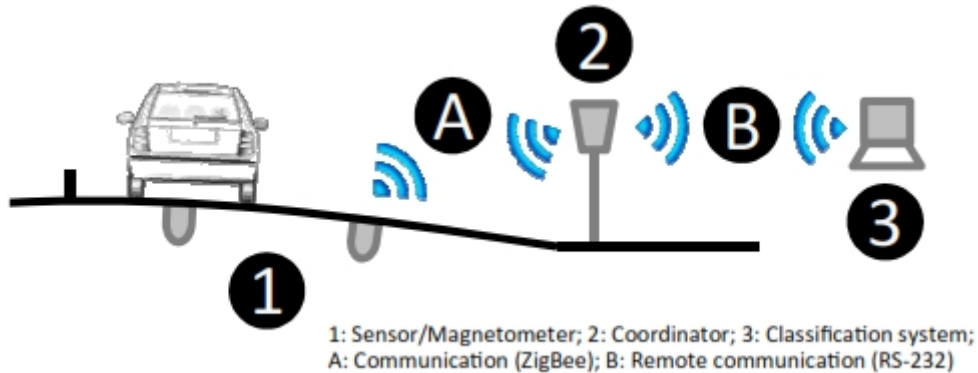


More info at <http://www.brisainovacao.pt>



SENSING THE ROAD - SMART ROAD SENSOR

A reliable, flexible, wireless, compact unit, Brisa Innovation's "Smart Road Sensors" uses sensitive magnetometer cells to detect and measure vehicle movement. Real-time data is transmitted to the traffic management systems for advanced control and information services.



More info at <http://www.brisainovacao.pt>



CONNECTED VEHICLES - BRISA INNOVATION'S ON-BOARD UNIT DRSC 5.9GHZ/RSE

Intelligent vehicles and infrastructures are the ultimate goal to improve safety and mobility for road users. DSRC at 5.9 GHz was worldwide defined for vehicle-to-vehicle and vehicle-to-infrastructure communication services and Brisa is involved in the standardization and test of networking management protocols.

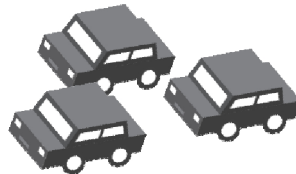
It can be used either as on-board unit or as road side equipment.

Own Vehicle



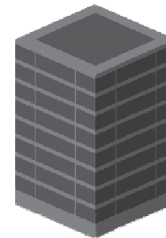
Broadcasts warning to avoid collision;
Send SOS request;
Uses traffic data and routing.

Other Vehicles



Receives warnings to avoid collisions;
Traffic data and routing.

Operations manager



Quick response;
Improves traffic flow and safety;
Better data for control and information.

More info at <http://www.brisainovacao.pt>



VIA VERDE PORTUGAL - A SUCCESS CASE FOR ELECTRONIC TOLL COLLECTION

For more than 20 years Via Verde stands for success in Innovation. It allows road users to: a) comfortably use tolls (at normal speed without stopping); b) fill up their cars' tanks; c) grab a burger; d) park without worrying for having pocket change or even e) accessing closed urban compounds.

Simplicity is key: to benefit from all these services, you just need to equip your vehicle with an OBU (On-Board Unit), associated with your debit card.

But although the most visible aspect of VV is technology, VV's concept has much more to it. It's about the right process design, adapting to the users' needs. ETC systems are as good as smooth and reliable the banks interaction are. The Key to VV success in Portugal is a result of having found the right players for the right parts. But technology shouldn't be dismissed; it is essential for IT systems reliability and performance processes, allowing for cost efficiencies and automated processes.

One can judge the impact Via Verde had in Portugal by small details, common in Portuguese society. Such as a traffic sign of its own; or you might also hear on the streets, when someone wants to refer to something as being fast and effortless: "Take the Via Verde!"



More info at <http://www.viaverde.pt>



TOLL EVASION DECREASING - ALPR: AUTOMATIC LICENSE PLATE RECOGNITION

Toll evasion is not only a direct threat to revenue collection, but also has indirect impacts in customer relationship management. Brisa's concession is largely composed by closed systems, where having exact and precise data, on both entries and exits, is crucial. Otherwise, it would be hard to determine violations from common good-faith mistakes from well-intended road users and clients.

Vehicle identification is key in the Toll Collection process where, at that time, a high percentage of heavy vehicle trailers' transactions failed to be identified and thus collected. In toll plazas, cars with fake license plates kept jeopardising the client relationship with the Toll Operator. Manual processing of a large volume of images was slow and had low rates of success and involved a large number of BackOffice operators.

At some point, all these toll leakage situations were estimated to represent a substantial percentage of the toll revenue. A new solution was necessary to guarantee toll collection whenever a normal ETC transaction was not possible.

Combining Infrared and visible light cameras and thus assuring 95% of positive identification, the solution developed and integrated in over 800 toll lanes faced these challenges and had a direct impact of 2.6 Million Euros annual, with a NPV estimated to be over 30 Million for a 25 year period.



FOREIGN AFFAIRS - SELF-SERVICE LICENSE PLATE ASSOCIATION

Portugal is proud to welcome each year hundreds of thousands of foreign vehicles. We also develop the habit to provide innovative technological solutions, and tolling systems have been no exception with Brisa Innovation leading a predominant role in this strategy. Previous systems using charging prepaid accounts resulted in excessive management efforts and poor results, as a consequence of a non intuitive process.

With this in mind, the National Roads Authority (EP) challenged Brisa Innovation to conceive a new solution. It should give each foreign driver the chance to comfortably pay tolls on the recently implemented free flow systems in former shadow toll roads across the country, without the need to deal with tag distribution.

In only 2 months, a complete solution was designed, produced, implemented and, more importantly, adopted by road users from foreign countries.



More info at <http://www.brisainovacao.pt>



Home Run

In conjunction with high frequency transport on dedicated routes, urban mobility also needs capillary point-to-point networks to reach neighbourhoods and suburbs.

This is usually achieved with buses sharing normal roads with regular traffic, serving large geographic areas and an often more senior population, and presenting a steeper learning curve in terms of routes and timetables.

All this poses specific challenges. How do you guarantee minimum passenger numbers per trip? And how do you ensure comfort when the journey is often long and involves bus changes?

As a wide array of information is provided on vehicles, at stops or via smartphones, the passenger always knows which route and what alternatives to choose as well as transit and waiting times. And, since the journey may be long, entertainment is provided too.

To speed things up on board, ticket purchase has been simplified, whether in its traditional form or through the mobile phone, offering different solutions according to operator and passenger needs.

Designed for operators of all sizes, Home Run provides truly integrated management. Ticketing, communications, passenger information, financial control, system management.

the Home Run solution



City Pulse

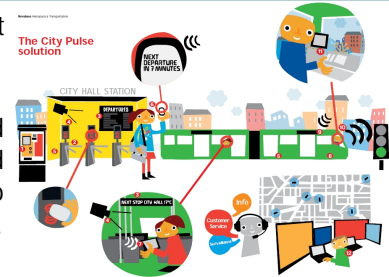
Concentrating millions of people into cities makes them energy-efficient habitats. But how do we make sure all these people can move quickly?

One answer is transport with exclusive lanes aimed at high frequency and volume of passengers. While traditional solutions such as underground metro have huge lead times and are expensive, alternatives like light metro in exclusive lanes, either on rail or on tires, are much simpler to implement.

The key factors here are speed, simplicity and automation. For maximum fluidity vehicles travel along exclusive lanes with the driver totally concentrated on driving. In road solutions, automatic guidance may allow for narrow lanes, saving urban space. Crossings are managed so as to provide non-stop routes to the metro vehicles. Extensive information and entertainment provided to passengers along the journey greatly improve their perceived experience.

Stations welcome passengers providing security, comfort and information. Closed stations, even in a small scale, may maximize all these factors. Tickets are purchased and validated before boarding, mainly through self-service easy-to-use and remotely assisted devices. Intermodality, i.e. the integration of various transport modes in a single trip, is paramount.

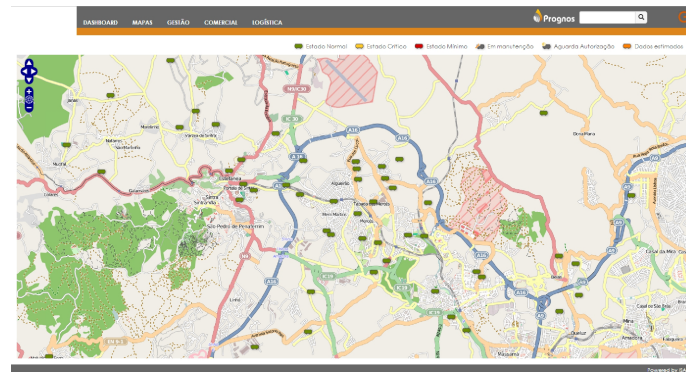
City Pulse manages everything, from ticketing - traditional or mobile - to infotainment and security, from vehicle telemetry to comfortable and safe driving, from fleet management to control of the entire operation, resulting in a flexible and effective system which is accessible to everyone, even to those who require special care.



Prognos

Prognos is a data management software developed to assist LPG and fuel companies in their distribution activities. Through the remotely monitored data, companies improve their logistics processes and reduce distribution costs.

This platform integrates critical data about fuel consumption among other indicators. The monitored data is accessible from anywhere and can be integrated in the client's different ERP systems. The information offered by Prognos is adapted to the different players in the chain of distribution, allowing them to make decisions in a more efficient and productive manner.



More info at <http://www.isasensing.com/>





Security



vb e-pass portable®

Mobility is the keyword. Vision-Box® has created a handheld, all-in-one portable unit that collects biometric enrolment data, and which also performs ID checks by connecting with local or centralized databases.

The versatility and size of the vb e-pass portable® are the key drivers for its multiple applications: Citizen enrolment in large territories with dispersed populations, enhanced security checks at any location (fiscalization operations, field clearance, road blocks, prison inspections, work and residence permit follow ups) or even contingent border controls, and many others.

The vb e-pass portable® has already been adopted by Portuguese Embassies around the world, and was deployed in South Africa for passport issuance during the 2010 World Cup. It comprises all the features included in the acknowledged vb e-Pass kiosk, which is used in more than 100 countries and has gathered biometric information from more than 4 million citizens, with an unbeatable track record.



More info at <http://www.vision-box.com/>



vb e-pass desktop®

vb e-pass desktop® is the first solution in the market to address mass enrolment needs. This integrated front-end unit performs the optimized capture and enrolment of the face image, fingerprints and electronic signature in less than 60 seconds.

With many units connected to one monitoring computer, this plug & play solution supports both the operator and the user through all the stages of the citizen enrolment workflow, providing usage instructions and feedback in the form of configurable text, pictures and animations, displayed on an integrated screen.



More info at <http://www.vision-box.com/>



Fraud Prevention

Fraud Prevention is helping payment processing companies and other financial institutions prevent fraud before it occurs, in real-time.

With dramatically lower false positive rates, companies are transforming their auto-screening practices and case management.

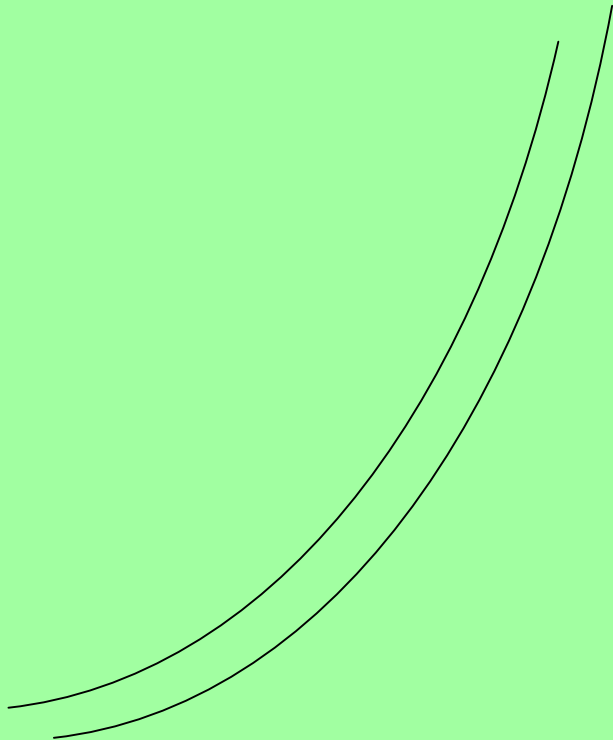


- Delivers the industry's best sub-second automated fraud screening results with the lowest percent false alerts.
- The Fraud Prevention Optimizer is the industry's gold standard for managing tradeoffs between blocked fraud, false alerts, manual review costs, and customer satisfaction.
- Includes alert workflow management for manual review and disposition.
- Reports and KPI tracking for fraud department performance.
- Computes real-time and historic profiles of users/cards, merchants and fraud.

Continually minimizes false alerts by retraining fraud models every week instead of every six months, as is industry practice.

More info at <http://www.feedzai.com>





Software



netCLARUS: Powerful Network Cost Management

WeDo Technologies' netCLARUS provides Service Providers with ready access to all of their data and the ability to analyze billions of records to help identify, monitor and reduce variable network operating expenses and positively impact their profitability.

netCLARUS includes the following modules:

netCLARUS TRAFFIC Module

- Identify cost savings in local LD and SMS usage.
- Optimize Traffic Cost Management
- Prioritize Voice Peering
- OPEX Reduction and Profit Maximization

netCLARUS INTERCONNECT Module

- Managing costs and Intercarrier compensation
- Provide a negotiating edge
- Monitor and Reconcile Intercarrier Costs
- Interactive Management of Intercarrier Agreements (ICAs)



netCLARUS ™

With netCLARUS we've helped some of the largest Service Providers in North America understand their variable usage cost and eliminate \$100s of millions in expenses.

More info at <http://www.wedotechnologies.com/traffic-analytics>



RAID 7: WeDo Technologies' Enterprise Business Assurance Software

WeDo Technologies is a worldwide leader in Enterprise Business Assurance, providing software and expert consultancy, to intelligently analyze large quantities of data from across an organization helping to negate or minimize operational or business inefficiencies and allowing businesses to achieve significant return on investment via revenue protection and cost savings.

The key components of a business assurance strategy addressed by WeDo Technologies' RAID Software include the following:

- Revenue Assurance
- Cost & Margin Assurance
- Fraud Management
- Rating and Billing Validation
- Business Process Control



WeDo Technologies works with some of the world's leading blue chip companies from the retail, energy and finance industries, as well as more than 180 telecommunications operators from more than 80 countries, through almost 500 highly-skilled professionals.

More info at <http://www.wedotechnologies.com/raid7>

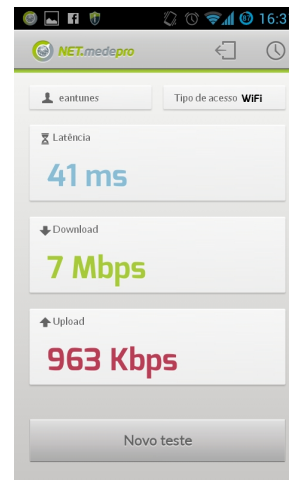


Telecommunications



uMeter

A Quality of Service (QoS) Measurement System for Internet Applications provided by Internet Service Providers (ISP's). It allows the comparison of past internet connections with equivalent services in the same region or country. The access to the results can be made in real-time or saved for latter analysis.



More info at <http://www.ubiwhere.com>



ACM - Active Campaign Manager

Companies that offer products and services (Service Providers - SP) to their customers compete every day to increase their revenue, grow the customer base, increase in the market share of their products through boosting the use of their products by customers, increasing customer loyalty, among others. Campaigns and promotions are important tools to achieve these goals.

The product Active Campaign Manager (ACM) is a platform to create, launch and execute inbound and outbound promotions.

ACM is a solution for the design and execution of contextualised campaigns and promotions in real-time. By using customer behaviour information and customer context, the SP can target customers with personalized accurate campaigns leading to significantly better results.



More info at <http://www.openidea.com/>



GPON IN-A-BOX Solution

GPON IN-A-BOX is a state of the art turn key complete solution for any size GPON Network Deployment from project to service delivery.

- Adaptable to any scenario - Suitable for low density and high density areas;
- OLT - Integrated RF Overlay Feature;
- Interoperable ONT - Full integration and scalable solution for your network GPON;
- WiFIBER Hotspot Solution- A new network architecture using GPON;
- ONT7-MBH - For Fiber to Cell and Fiber to the Business scenarios;
- MicroMSAN - For fiber to the building;
- Management and Monitoring - Improve operational e-ciencie of your optical network;
- Customization is in our DNA - Open Idea offers customized telecommunications solutions and services.



More info at <http://www.openidea.com/>



APM - Active Portfolio Manager

The Active Portfolio Manager (APM) is a solution specialized in the management of products and services of a communications service provider (CSP). This tool is able to centrally and consistently manage the entire life cycle of products and services, integrating with other systems of the BSS/OSS ecosystem.

Considering the diversity of products and services that a modern triple play or quadruple play operator can potentially commercialize, as well as the diversity of BSS and OSS that support these products and services, it becomes clear that CSP face major challenges regarding the growing competitiveness of the market in order to please and retain its Customers, differentiating itself from their competition in innovation and time to market.



More info at <http://www.openidea.com/>



ALTAIA® - Performance and QoS Management Platform

The ALTAIA® platform is OPEN IDEA'S solution of Performance and QoS Management for telecommunications networks and services.

It consists of a set of modules that together give an integrated and unified picture of:

- Network, Service and Customer indicators;
- Quality of service indicators;
- CDR, IPDR, xDR and metrics analysis;
- Service guarantee analysis;
- Threshold alarms generation;
- Performance alarms analysis;



More info at <http://www.openidea.com/>



SMART2M - Machine-to-machine service delivery platform

Smart2M is a machine-to-machine service delivery platform (M2M SDP) capable of supporting a new generation of M2M services across a wide range of business areas and sectors. It brings together functions relating to application enablement and connectivity management.

Smart2M allows CSP's and M2M SP's to create differentiation in M2M services, reduce churn in their customer base, generate new revenue streams and reach customers in new markets.



Energy & Metering



Healthcare & Well-being



Transportation & Automotive



Agriculture & Eco-Sustainability



Home & Building Automation



Manufacturing & Retailing

More info at <http://www.openidea.com/>



O2CS - Online & Offline Charging System

NGIN Quantum O2CS (Online and Offline Charging System) is Open Idea's answer to the next generation of rating and charging systems for Communication Service Providers (CSPs), as envisioned by TMForum's TAM Framework and specified by 3GPP.

Following this approach, NGIN Quantum O2CS is a key component in a BSS ecosystem, receiving inputs from Customer Information Management, Order Management, P&S Catalog and from the network, and providing output (via CDR) to Billing,

Business Reporting and Campaign Management. It can also originate customer modification requests and fulfillment requests.



More info at <http://www.openidea.com/>



ONT7 - GPON CPE Solutions

The ONT7 Customer Premises Equipment solutions are the right choice for those who implement a GPON optical network termination. The equipment architecture is based on Rec. ITU G.984.x and supports multiplay service enabling High Speed Internet (HSI), Voice and Video services through Ethernet, WiFi, FXS and RF Overlay standard interfaces. Mobile backhaul and dedicated TDM business services are also enabled.

Our ONT7 equipment solutions are BBF.247 certified (multi vendor OLT interoperability) and can be easily configured to differentiate operators business whether retail, wholesale and mobile.

Fiber-to-the-Home (FTTH), Fiber-to-the-Building (FTTB), Fiber-to-the-Business (FTTb), Fiber-to-the-Curb (FTTC)

And Fiber-to-the-Cell (FTTc) are typically the target FTTx deployment scenarios to be considered within our offer.



More info at <http://www.openidea.com/>



Smart2M - Machine-to-Machine Service Delivery Platform

Smart2M for a much more efficient future

Presently, M2M is seen as being a market of high potential and growth. Current estimates indicate that by the year 2020, several tens of billion devices will be globally interconnected.

Smart2M allows CSP's and M2M SP's to monetize opportunities in the business of connected objects, offering to their customers innovative solutions to reduce costs, increase operational efficiency and accelerate the decision making process.

What is it For?

Smart2M is a Machine-to-Machine Service Delivery Platform, capable of supporting a new generation of intelligent and innovative M2M services, in several areas and sectors of activity.

Smart2M allows CSP's and M2M SP's to create differentiation in M2M services, reduce churn in their customer base, generate new revenue streams and reach customers in new markets.

Smart2M simplifies the process of managing M2M connectivity and accelerates the development of new services and applications in a broad range of verticals.

More info at <http://www.openidea.com/>



Two thin, black, curved lines that start from the left side of the page and curve upwards and to the right, ending near the top of the text.

Touch... Information



DISPLAX Moovit

DISPALX Moovit is an interactive floor. Contents are projected to the floor and react to people's motion when walking over it.

Allows the creation of immersive multimedia scenarios, where people can engage with a message while having fun.



Product video: <http://vimeo.com/edigmagroup/moovit>
More info at www.edigma.com/en/products/displax-moovit.html



DISPLAX Multitouch Globe

DISPLAX Multitouch Globe is a multitouch spherical display, with a surface in the shape of a dome.

Providing a unique and memorable experience to users and visitors, it can be applied to Geographical Information Systems, Museums, TV Networks and Visitor attraction or Entertainment facilities.



Product video: <http://vimeo.com/edigmagroup/multitouch-globe>
More info at www.edigma.com/en/products/displax-multitouch-globe.html



DISPLAX Oqtopus

DISPLAX Oqtopus is the state-of-the-art multitouch table. It combines stunning design with a disruptive multitouch technology, and includes a true multitouch and multiuser customizable software.

It's unique combination of totally flat surface and slim profile allows an iPad™ form factor. The 47" display lets several people interact and share contents at the same time, in a collaborative environment.



Product video: <http://vimeo.com/edigmagroup/oqtopus>
More info at www.edigma.com/en/products/displax-oqtopus.html



DISPLAX Skin Multitouch

DISPLAX Skin Multitouch is the first through glass multitouch technology available for large formats.

Non conductive surfaces can now become interactive, with multiple touches and users simultaneously (multitouch and multiuser) when this flexible interactive foil is applied on its back.



Product videos: <http://vimeo.com/edigmagroup/skin-multitouch> and <http://vimeo.com/edigmagroup/skin-multitouch-windows-8>
More info at www.edigma.com/en/products/displax-skin-multitouch.html



DISPLAX Pad

DISPLAX Pad is an all-in-one large format multitouch system with a totally flat surface and sleek design. It is a plug & play system so it comes ready to hang and start enjoying the multitouch experience.



More info at www.edigma.com/en/products/displax-pad.html



DISPLAX Pathfinder

DISPLAX Pathfinder is an interactive directory, a wayfinding solution to help people find their way inside large facilities, like shoppings, airports and business centers.



Product video: <http://vimeo.com/edigmagroup/pathfinder>
More info at www.edigma.com/en/products/displax-pathfinder.html



DISPLAX Crayon

DISPLAX Crayon is an interactive table designed for children, with entertaining and educational contents included.

Creating a “fun and joy” atmosphere through a furniture design that is appealing to children, it features painting, drawing and recycling apps, among other games.



Product video: <http://vimeo.com/edigmagroup/crayon>
More info at www.edigma.com/en/products/displax-crayon.html





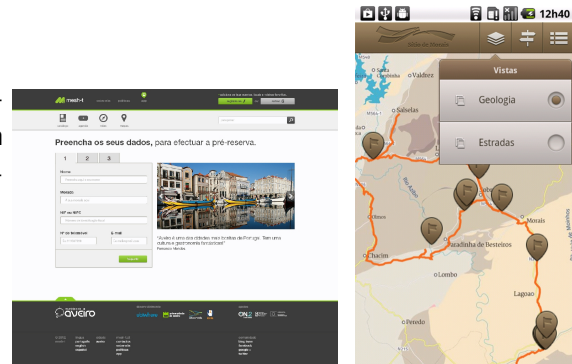
eTourism

Pervasive Tourism

Boasting the latest technology, Pervasive Tourism integrates four distinct solutions:

- A mobile travel guide for Smartphone devices that provides users with a multimedia experience on points of interest and events while visiting a city or a region. The tourist can follow thematic routes or create his own paths;
- A mobile museum guide that provides users with a multimedia experience while visiting a museum and an exhibition. The user always knows where he is and what surrounds him;
- An interactive software that allows the visitor to control and manage contents by gesture recognition technology. This touch less interaction offers an enriching and innovative experience;
- A virtual tourist card that allows the creation of prepaid visiting packages. The card provides tourists' automatic recognition and the creation of tourists' profile in order to improve the regional tourism strategies.

These four distinct solutions allow its users a unique experience while the platform operators' benefit from an effective marketing and BI tool in gathering and accessing visitors' data.

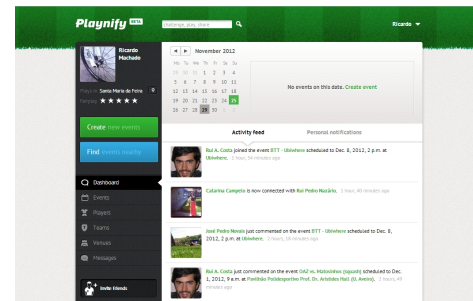


More info at <http://www.ubiwhere.com>



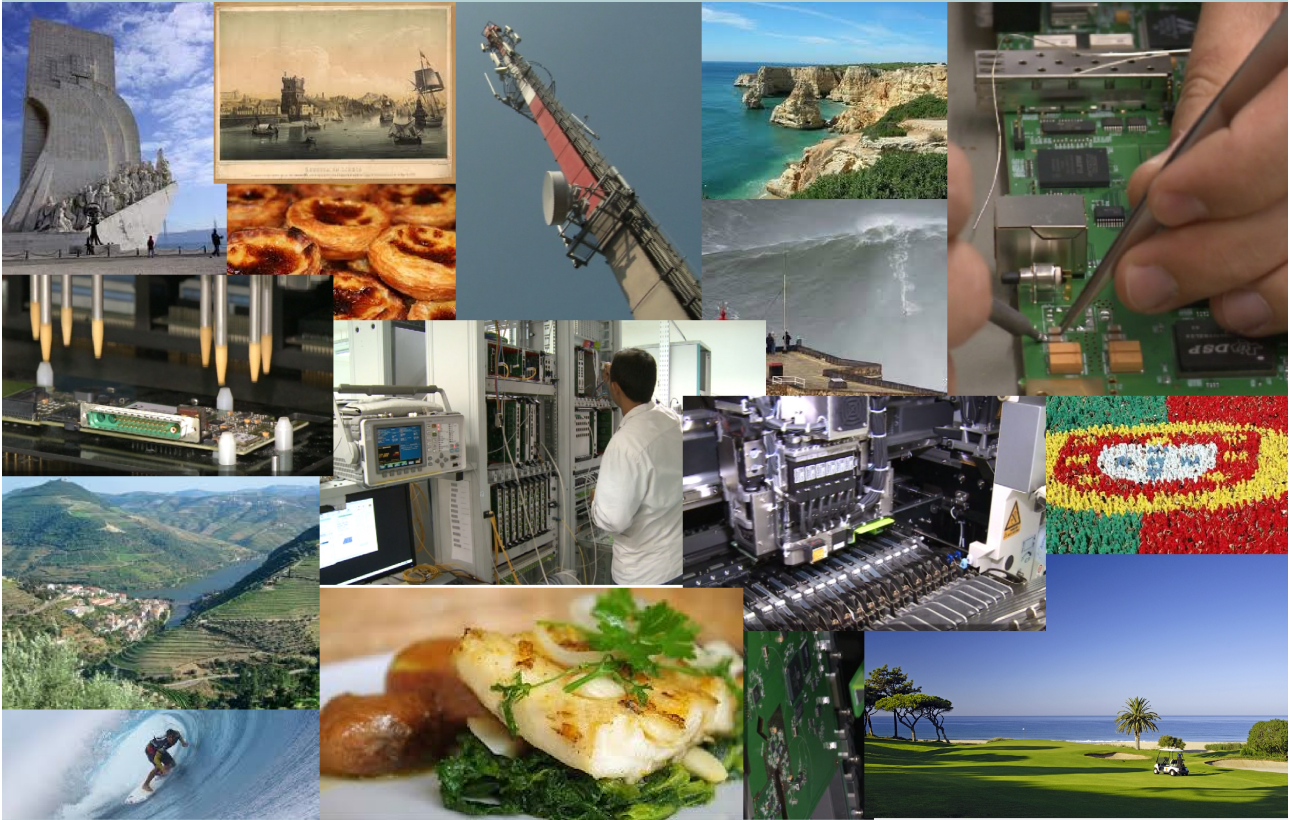
Playnify

A social network web platform designed for all sports lovers. This platform provides tools that make the scheduling of matches easier and faster, allowing users to find other players or sports venues anywhere in the world.



More info at <http://www.ubiwhere.com>



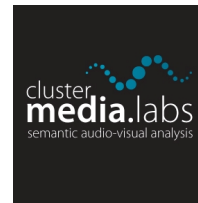




The Products / Services presented belong to the following



Assuring your Business for the Future



To them, our special thanks..



tice.pt

Portuguese National
ICT Cluster

Campus Universitário de Santiago – IT
3810 – 193 Aveiro Portugal

T. +351 234 427 443

geral@tice.pt
www.tice.pt

